



S.A.F.E. Newsletter



June is

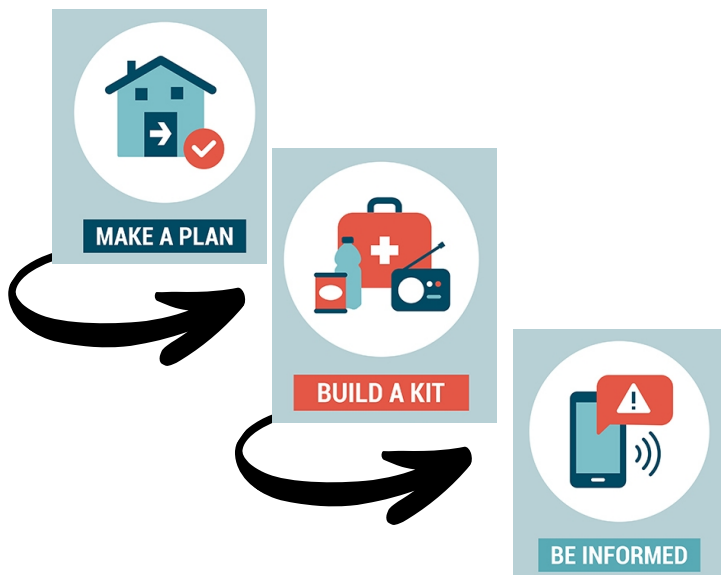
National Safety Month

Safety Topics

1. Emergency Preparedness
2. Slips, Trips, & Falls
3. Heat-Related Illness
4. Hazard Recognition

Go to the [National Safety Council](#) website for more information on each topic!

Emergency Preparedness



Hazard Recognition

How to:

1. **Survey the Area** to identify potential hazards in the area or activity.
2. **Determine the likelihood and potential severity** of each hazard identified.
3. **Evaluate the risk** associated with each hazard.
4. **Implement appropriate changes or controls** to prevent or minimize the risk of harm.
5. **Monitor** and review the effectiveness of the controls regularly.

Every two minutes...

National Safety Month: Hazard...

preventable injuries cause 1 death and 236 injuries

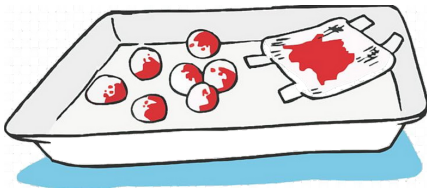
Watch on YouTube

Safety Reminders

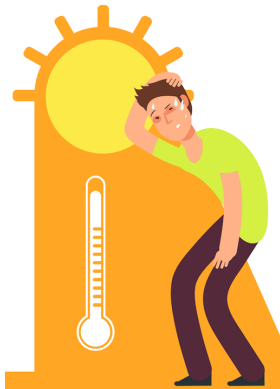
Directions: Match the item to its correct regulation or requirement.



Ensure that you know where your **spill kit** is located and check it annually to make sure it is viable for your biological, chemical, or radiological hazard.



Must be enrolled in **UAMS Respiratory Protection Program** to wear a N-95 or any other **respirator**.



Ensure to wear loose clothing, drink plenty of water, and work in the shade or shifts to prevent **Heat Related Illness**.



Soiled Gauze or Bandages should go into the **Red Biohazard Containers**. Do **not** put in the trash.

Waste SEGREGATION

<p>SHARPS Rigid Red Container with Biohazard Label</p>	<p>BIOHAZARD WASTE Red Liner & Container with Biohazard Label</p>	<p>TRACE CHEMO WASTE Yellow Rigid Container</p>	<p>TRASH Clear Trash Bags with Trash Can</p>
<ul style="list-style-type: none"> -Needles & Syringes -Ampules & Glass Bottles -Broken Glass -Blades & Scalpels -Sutures & Scissors -Staples -Used Vaccine Vials -IV Catheters & Stylets -IV Butterflies -Any Other Sharps <p>*Do <u>not</u> fill past fill line.</p> <p>*Close lid once full & place work order for pickup.</p> 	<ul style="list-style-type: none"> -Infectious Waste -Blood & Blood Products -Foley or IV with visible Blood -Heavily Soiled Gauze or Dressing (with blood or OPIM) -Suction Canisters or Other Infectious Liquids (<u>must</u> use solidifier) -Post-Partum Sanitary Pads <p>*Anything Soaked with Blood or Other Potentially Infectious Material (OPIM)</p> <p>*Not urine or feces.</p> 	<ul style="list-style-type: none"> -Items Contaminated with Chemo or that once contained chemo (but are now empty): <ul style="list-style-type: none"> • Foley & Bag • Sharps • Emesis Basin • Bedpan • Urinal • Chemo Gloves • IV & Tubing <p>*Partially fully Chemo IV Bags go in black bins.</p> 	<ul style="list-style-type: none"> -IV Tubing (no visible blood) -Empty Bedpans, Urinals, & Emesis Basins -Empty Foley Catheter & Bag (no visible blood) -Lightly Soiled Gauze or Dressing -Gloves, Gowns, & Other Lightly Soiled PPE -Packing & Boxes -Food & Food Packaging -Used Tissues & Paper Towels <p>*Do <u>not</u> use Biohazard Bags in Regular Trash.</p> 
<p>BULK CHEMO WASTE (RCRA HAZARDOUS DRUG WASTE) Black Rigid Containers</p>	<p>NON-RCRA PHARMACEUTICAL WASTE Blue Bins</p>	<p>LINENS Mint Bags that go in Linen Cart</p>	<p>RADIOACTIVE WASTE Blue Bags</p>
<p>*Follow Pyxis Instructions.</p> <ul style="list-style-type: none"> -RCRA Hazardous Meds. -Half/Partial Doses of Chemo. -Bulk Chemo. <p><u>P & U-Listed Drugs</u>: sole active ingredient & not used for intended purpose.</p> <p>*Clear Bag P-List Drugs first.</p> <p><u>RCRA Hazardous Drugs</u>: ignitable, corrosive, reactive, & toxic.</p> <p>*<u>Unused</u> Chemo & Controlled Drugs must go back to the pharmacy.</p> 	<p>*Follow Pyxis Instructions.</p>  <p>*Blue drug waste non-RCRA, and non-Chemo waste. (Commonly called non-hazardous drug waste, but this is a misnomer).</p> <p>CONTROLLED DRUG WASTE Stericycle CsRX Beige Bin</p> <p>*Follow Pyxis Instructions.</p> 	<ul style="list-style-type: none"> -Used Cloth/Linen -Towels & Sheets -Pillowcases -Washcloths -Gowns <p>*Infant Sleep Sacks: Purple Bags & separate container</p> 	<ul style="list-style-type: none"> -Radioactive Waste <p>*Do not touch unless you are trained to do so.</p> <p>*Contact OHS-Radiation Safety if you have any questions.</p> 